





XLSLB SERIES

CONDUIT BODIES



INCLUDES:

-  x 2 cover screws
-  set screws for EMT
-  x 1 neoprene gasket
-  x 1 stamped aluminum cover



CONSTRUCTION

- Die cast aluminum combination fitting (EMT and rigid) available in 1/2", 3/4", 1", 1-1/4", 1-1/2", 1-3/4" and 2" sizes.
- Unit is threaded for rigid conduit and has set screws for EMT.
- Durable grey powder coat paint finish.

FEATURES

- Product includes conduit body, black neoprene gasket, stamped aluminum cover with screws.

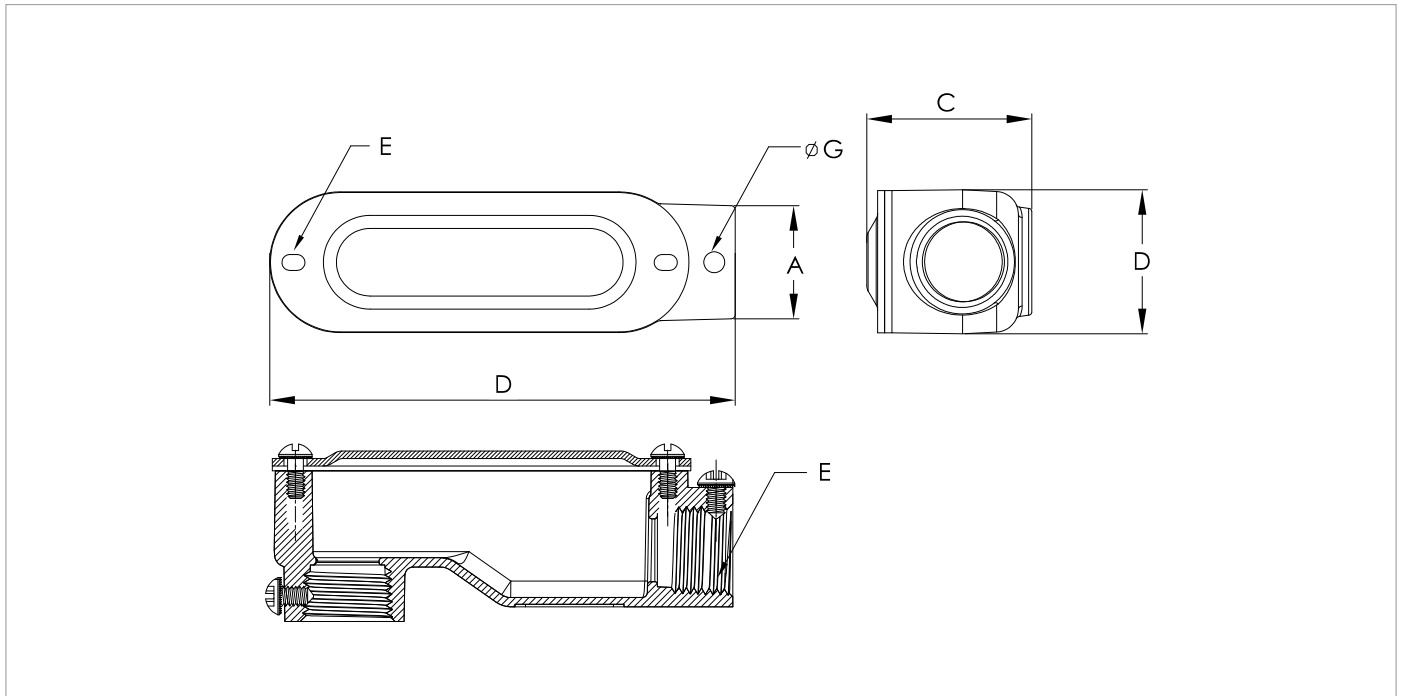
APPLICATION:

-  Ideal for industrial or commercial use
-  Weather resistant

CERTIFICATION:



DIMENSIONS



PRODUCT	A	B	C	D	E CONDUIT SIZE	F COVER SCREWS	G SET SCREWS
XLSLB-50-CG CONDUIT BODY	1.06	4.29	1.63	1.31	1/2"	2x8-32	2x10-24
XLSLB-75-CG CONDUIT BODY	1.32	5.05	1.97	1.53	3/4"	2x8-32	2x10-24
XLSLB-100-CG CONDUIT BODY	1.54	5.93	2.20	1.80	1"	2x8-32	2x10-24
XLSLB-125-CG CONDUIT BODY	1.93	7.74	2.91	2.51	1-1/4"	2x12-24	4x1/4-20
XLSLB-150-CG CONDUIT BODY	2.17	7.74	3.07	2.50	1-1/2"	2x12-24	4x1/4-20
XLSLB-200-CG CONDUIT BODY	2.69	9.89	3.75	3.12	2"	2x12-24	4x1/4-20

ORDER INFO

STOCK CODE / DESCRIPTION
008862 XLSLB-50-CG CONDUIT BODY
008863 XLSLB-75-CG CONDUIT BODY
008864 XLSLB-100-CG CONDUIT BODY
008865 XLSLB-125-CG CONDUIT BODY
008866 XLSLB-150-CG CONDUIT BODY
008867 XLSLB-200-CG CONDUIT BODY