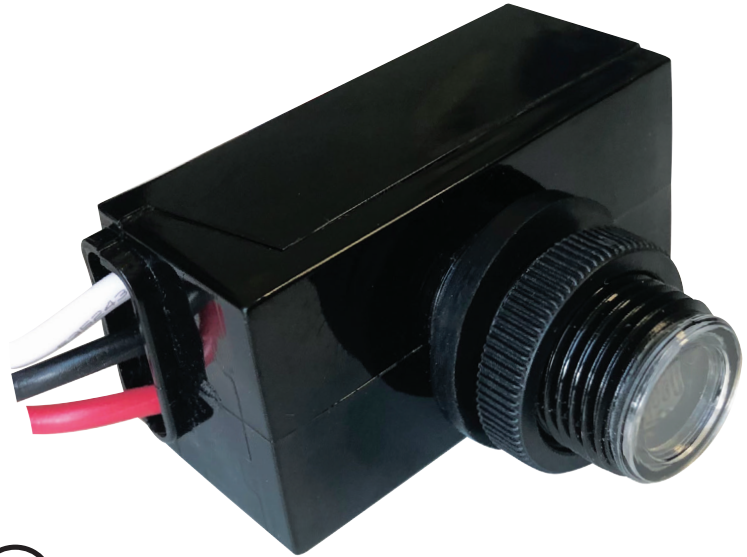


## RA-403C

### 120-277V BUTTON PHOTOCELL

**Universal 120-277V photocell ideal for use on wall lights, floodlights in pathway and perimeter lighting applications.**

- Photocell works for any input voltage in the 120 – 277V range.
- Set for dusk to dawn operation.
- Preset 3 – 10 second time delay to avoid false triggering due to unexpected light flashes at night.
- Polycarbonate housing with UV resistant window.
- Can be used with any 120 – 277V fixture.



### COMPATIBLE WITH THE FOLLOWING RAB FIXTURES



WP-LED



AWL2/3



RFL-LED



VFL-LED



ORA-LED



WL-LED15

### TECHNICAL SPECIFICATIONS

	RA-403C
Voltage	120-277V
Load Rating	5A Driver 850VA Ballast 500W Tungsten
Power Consumption	2W
Operating Levels	10-20 lux to turn ON 30-80 lux to turn OFF
Ambient Temperature	-40°C to +70°C
Lead Length	1.8 cm
Head Diameter	11/16"
Dimensions	2.15" X 1.14" X 1.73"

\*Standard Configuration

### ORDERING INFORMATION

Stock Code	Description
080421	RA-403C 120-277VAC P/C RAB