

Introducing a New Hardwire Option for the UC120-LED Series



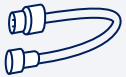
The **UC120 Wiring Compartment** allows direct wiring connections when installing UC120-LED series under cabinet lights instead of using a plug-in option.



Connect up to 400W per run.



Entries are for use with NMD90 14AWG and 3/8" cable clamp.



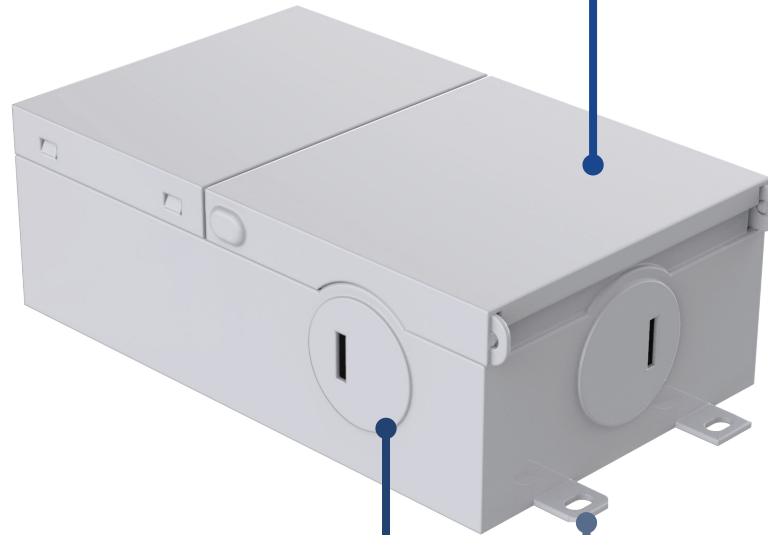
Interconnect cable to connect multiple compartments is available.



For more information, see detailed spec sheet at rabdesign.ca

Easy to open.

The compartment can be opened from the top for easy access.



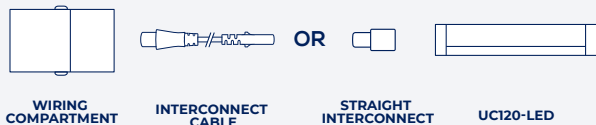
One entry on each side.

The box has four entries to suit any wiring option.

Mounting Tabs on Both Ends.

Can be mounted under a cabinet with four screws.

How It Connects:



Compatible With:
UC120-LED Series
Under Cabinet Lights

